

AMPLATZER® Vascular Plug II Case Study

Closure of Pulmonary Arteriovenous Fistula with AMPLATZER Vascular Plug II

J. Fritz Angle, MD
Associate Professor of Radiology
University of Virginia Health System
Charlottesville, VA



Procedure Description

A 31 year old male with a history of Osler-Weber-Rendu syndrome that has undergone multiple prior embolizations of pulmonary arteriovenous malformations (AVM) presented with dyspnea and hypoxia upon exertion. Computed Tomography Pulmonary Angiogram (CTPA) showed a large AVM supplied by the lingular artery with a feeding artery measuring 10mm in diameter. Through an 8Fr introducer sheath, a 5Fr diagnostic catheter and hydrophilic angled guidewire were used to access the lingular artery. The sheath was then advanced to the site of the fistula. A single 14mm AMPLATZER Vascular Plug II was deployed without difficulty. Oxygen saturation immediately improved from 90% to 100% on 2 liters of oxygen per minute. Total vessel occlusion time was 2 minutes.

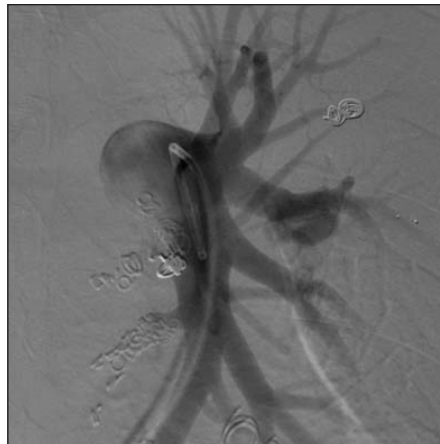


Figure 1.

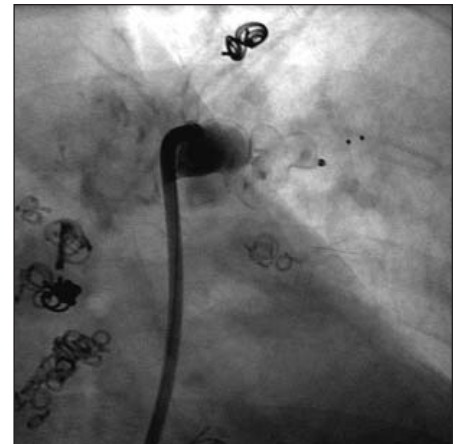


Figure 2.



Figure 3.

Images by Steve Haug, RT (R) (CV)



AGA Medical Corporation
5050 Nathan Lane North
Plymouth, MN 55442 U.S.A.

(888) 546-4407 Toll Free
(763) 513-9227 Phone
(763) 513-9226 Fax
info@amplatzer.com Email
www.amplatzer.com Internet

Refer to Instructions for Use for a complete listing of indications and usage, contraindications, warnings, and precautions. AMPLATZER is a registered trademark of AGA Medical Corporation. ©AGA Medical Corporation, 2007. Not in any way connected with medical gas or equipment sold under the "AGA" brand by AGA AB or its successors. This device may not be available in all markets. Contact AGA Medical Corporation for availability.

MM00294 (01) Global 10/07