

# AMPLATZER® Vascular Plug II Case Study

## Occlusion of Spermatic Vein Using AMPLATZER Vascular Plug II

Jafar Golzarian, MD  
Interventional Radiology  
University of Iowa, Iowa City, IA



### Procedure Description

A 24-year-old male presented with a large left-sided varicocele (Figure 1) and opted for spermatic vein embolization instead of surgical repair. A Bentson guide wire was introduced and a 4Fr Cobra guide catheter was placed and contrast was used to demonstrate adequate positioning as well as multiple distal collateral vessels branching from the spermatic vein. An exchange to a 90cm 5Fr shuttle introducer was placed over an Amplatz guidewire into the distal spermatic vein and contrast injection showed a small distal collateral vessel. A 4 x 3mm Tornado embolization coil was placed in a distal small collateral. A 12mm AMPLATZER Vascular Plug II (AVP II) was then placed in the distal spermatic vein (Figure 2). Contrast demonstrated no distal flow past the AVP II. A secondary 10mm AVP II was placed more proximally to a second collateral branch (Figure 3). Again, contrast injection in the proximal spermatic vein demonstrated no distal flow (Figure 4). Total vessel occlusion time was 5 minutes. Total procedure time was 30 minutes.



Figure 1.

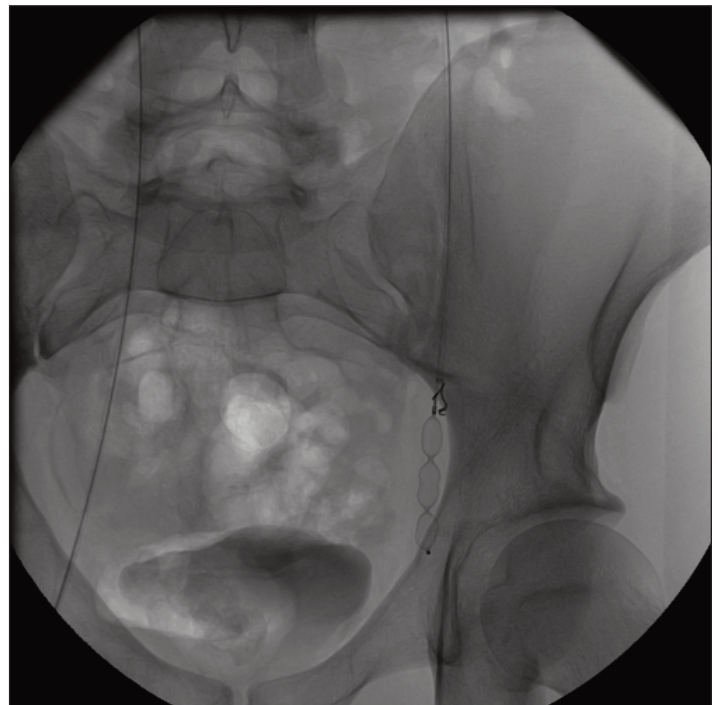


Figure 2.



Figure 3.



Figure 4.



**AGA Medical Corporation**  
5050 Nathan Lane North  
Plymouth, MN 55442 U.S.A.

(888) 546-4407 **Toll Free**  
(763) 513-9227 **Phone**  
(763) 513-9226 **Fax**  
info@amplatzer.com **Email**  
www.amplatzer.com **Internet**

Refer to Instructions For Use for a complete listing of indications and usage, contraindications, warnings, and precautions. AMPLATZER is a registered trademark of AGA Medical Corporation. ©AGA Medical Corporation, 2008. Not in any way connected with medical gas or equipment sold under the "AGA" brand by AGA AB or its successors. This device may not be available in all markets. Contact AGA Medical Corporation for availability.

MM00291 (02) Global 03/08