

AMPLATZER® Vascular Plug II Case Study

Closure of Complex Endoleak with AMPLATZER Vascular Plug II

Alan Matsumoto, MD
Professor of Radiology, Vice Chair, Department Radiology
University of Virginia Health System, Charlottesville, VA



Procedure Description

A 61 year-old male presented with a thoracic aneurysm. An open surgical aortic debranching procedure was followed by TAA stent graft placement. Upon follow-up CTA imaging (Figure 1), a large complex endoleak composed of both Type Ia and Type II components, was discovered. The Type II was supplied by a recanalized proximal native SMA which had been surgically ligated proximal to an iliac artery to SMA bypass graft. The Type Ia endoleak was first occluded using coils and a liquid embolic agent. With the use of a 45 cm guiding 6 Fr sheath, the 4.5 mm SMA supplying the Type II endoleak was occluded using a 6 mm AMPLATZER Vascular Plug II (white arrows, Figures 2 and 3). Four minutes after AVPII deployment, the SMA was shown to be occluded (Figure 3).



Figure 1. Pre-Treatment CTA

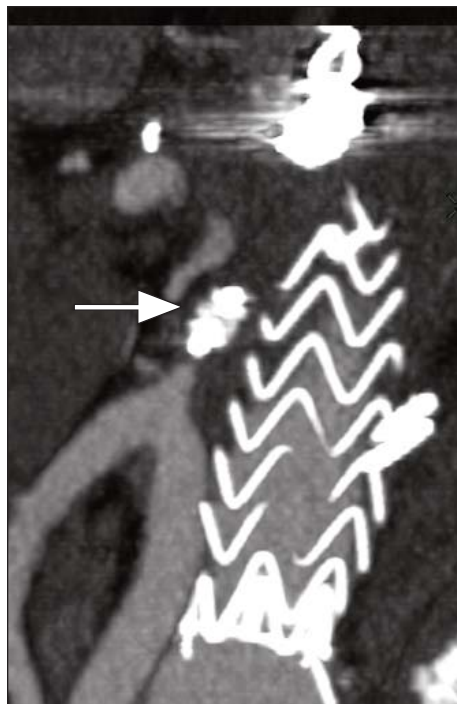


Figure 2. Post-Treatment CTA



Figure 3. Post-Treatment Angiogram



AGA Medical Corporation
5050 Nathan Lane North
Plymouth, MN 55442 U.S.A.
(888) 546-4407 Toll Free
(763) 513-9227 Phone
(763) 513-9226 Fax
info@amplatzer.com Email
www.amplatzer.com Internet

Refer to Instructions for Use for a complete listing of indications and usage, contraindications, warnings, and precautions. AMPLATZER is a registered trademark of AGA Medical Corporation. ©AGA Medical Corporation, 2007. Not in any way connected with medical gas or equipment sold under the "AGA" brand by AGA AB or its successors. This device may not be available in all markets. Contact AGA Medical Corporation for availability.