

AMPLATZER® Vascular Plug Case Study

Exclusion of Aneurysm in Subclavian Artery (Lusorian)



E. van der Linden
Interventional Radiologist
Interventional Radiology Department
University Medical Center Leiden, Netherlands

Procedure Description

A 78 year old male was presented with an aneurysm of the lusorian artery (lusorian). The lusorian artery is a unique variant of the right subclavian artery. It originates in the descending aorta arch and crosses behind the esophagus. After angiographic examination it was decided to exclude the aneurysm with AMPLATZER Vascular Plugs. A Terumo guide wire and a Cordis 8 Fr multipurpose guiding catheter were used for accessing the artery. First a 16 mm vascular plug was placed distal of the aneurysm. After 10 minutes the artery was occluded. Then a second 16 mm AMPLATZER Vascular Plug was placed proximal of the aneurysm. Total procedure time was 120 minutes. After 3 months a CT scan was performed to confirm total occlusion.

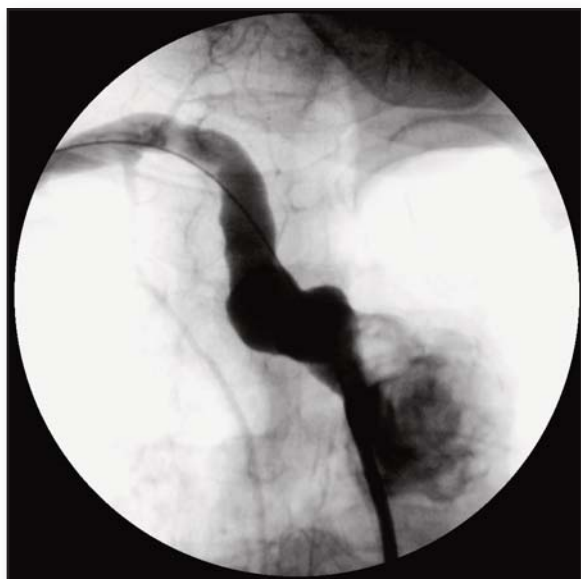


Figure 1: Starting situation, aneurysm in right subclavian artery (lusorian).

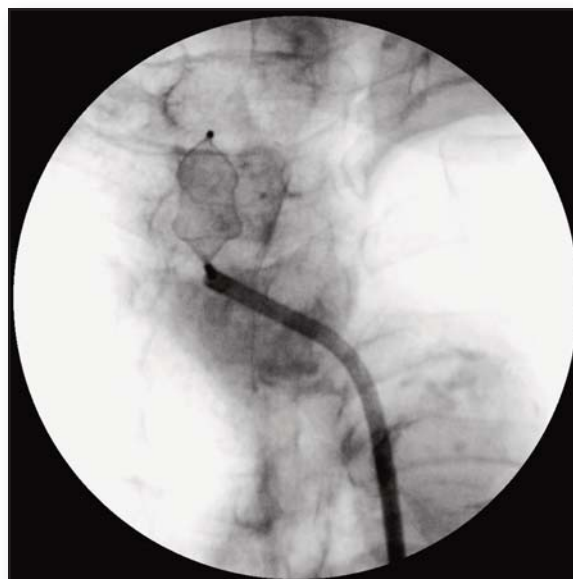


Figure 2: First 16 mm plug was placed distally.

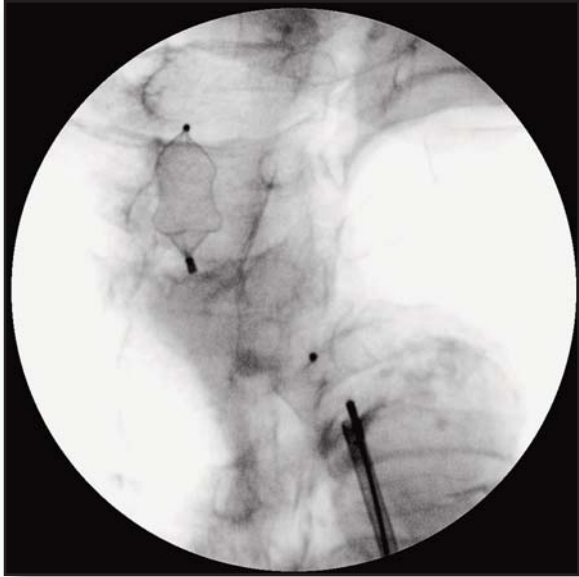


Figure 3: Second 16 mm plug was placed proximal.

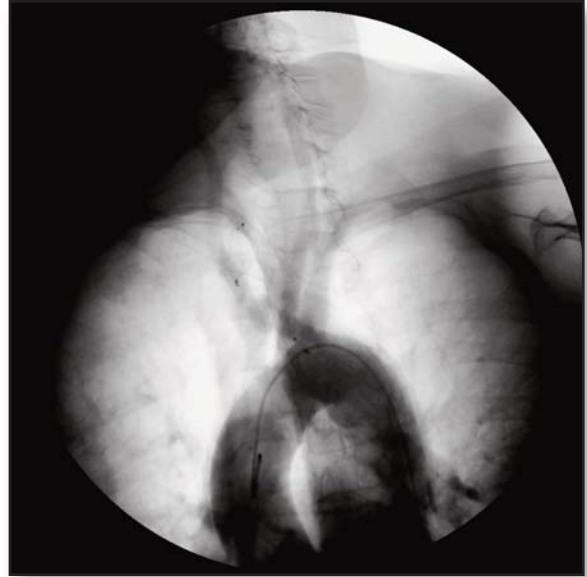


Figure 4: Control angio after placement.

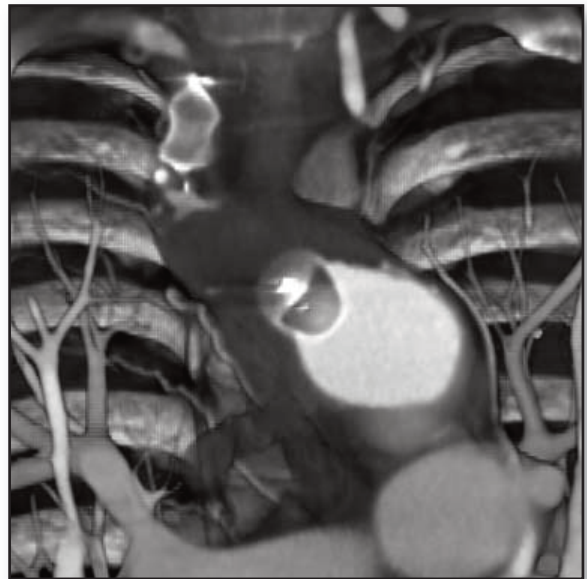


Figure 5: CT scan, 3 months after procedure, complete exclusion of aneurysm.



AGA MEDICAL
CORPORATION

AGA Medical Corporation
5050 Nathan Lane North
Plymouth, MN 55442 U.S.A.

(888) 546-4407 **Toll Free**
(763) 513-9227 **Phone**
(763) 513-9226 **Fax**
info@amplatzer.com **Email**
www.amplatzer.com **Internet**

Refer to Instructions for Use for a complete listing of indications and usage, contraindications, warnings, and precautions. AMPLATZER is a registered trademark of AGA Medical Corporation. ©AGA Medical Corporation, 2007. Not in any way connected with medical gas or equipment sold under the "AGA" brand by AGA AB or its successors. This device may not be available in all markets. Contact AGA Medical Corporation for availability.

MM00070 (01) Global 06/07