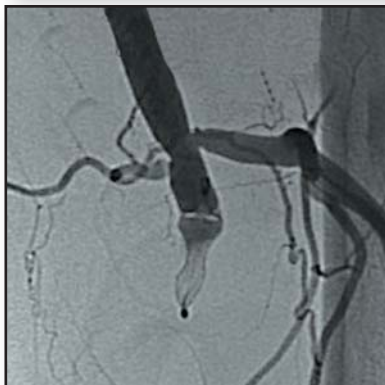
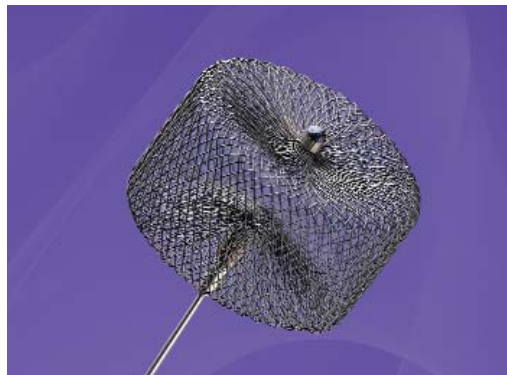


AMPLATZER® Vascular Plug Case Study

Aneurysm of the Superficial Femoral Artery

Prof. W. Mali, Interventional Radiologist
M. Olree, Interventional Radiologist
University Medical Center Utrecht, Netherlands



Procedure Description

Patient had a post-traumatic aneurysm of the distal SFA. Angiography determined that no vessels originated from the aneurysm. A Terumo guide wire and Cordis guide catheter were introduced utilizing an antegrade puncture technique. Angiographic measurement of the vessel just proximal to the aneurysm was 7 mm. A 10 mm AMPLATZER Vascular Plug was selected per the manufacturer's sizing recommendation of 30 - 50% above the targeted vessel diameter. The AMPLATZER Vascular Plug comes packaged pre-loaded in a loader which allows easy device introduction into the guiding catheter. Angiography confirmed device position. Total vessel occlusion time was 6 minutes. Total procedure time was 90 minutes.



AGA MEDICAL
CORPORATION

AGA Medical Corporation
5050 Nathan Lane North
Plymouth, MN 55442 U.S.A.

(888) 546-4407 **Toll Free**
(763) 513-9227 **Phone**
(763) 513-9226 **Fax**
info@amplatzer.com **Email**
www.amplatzer.com **Internet**

Refer to Instructions for Use for a complete listing of indications and usage, contraindications, warnings, and precautions. AMPLATZER is a registered trademark of AGA Medical Corporation. ©AGA Medical Corporation, 2007. Not in any way connected with medical gas or equipment sold under the "AGA" brand by AGA AB or its successors. This device may not be available in all markets. Contact AGA Medical Corporation for availability.

MM00001 (01) Global 5/07